

McLean UDG Advisory Group Meeting #7

Paving and furnishings

September 2022



Sidewalk Paving

- Paving patterns and materials
- Brick selection

Current Brick Paver Locations



Paving Design Feedback and Recommendations

Decision Point

Community Feedback

- Preference for brick and to keep what's in McLean = Option 1

Advisory Group

- 6 for Option 1
- 3 for Option 2
- 2 are Ambivalent

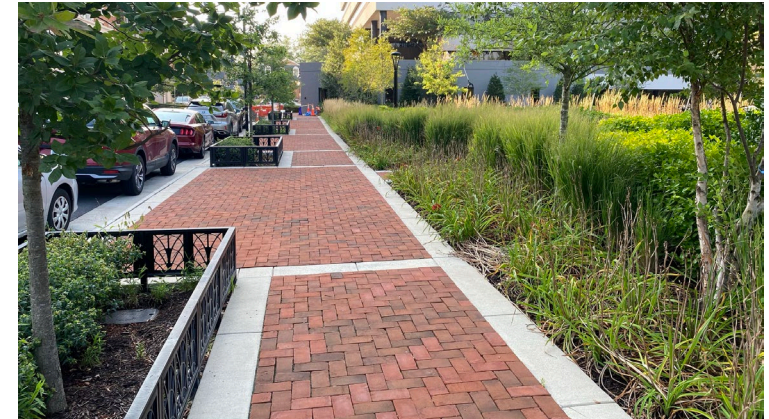
Staff Recommendation

- Option 1
- Brick at intersections

Alternate Recommendation

- Option 1 in the General and Edge zones
- Option 2 in the Center zone
- Brick at intersections

Option 1: Brick Panels



Option 2: Brick Amenity Zone + Concrete Travel Zone



Paving Material Selection

Color Mix: What's there today



@ Signet Park



Along Elm Street



Along Chain Bridge Rd

Paving Material Selection

- The following brick samples were available at the Supervisor's Office
- Each color option is available in: Traditional Edge, Permeable, and Drivable pavers



A - Pinehall Full Range

AG = 2-3



B - Belden Regimental Full Range

AG = 0-1



C - Pinehall Red

AG = 1

D - Whitacre-Greer Color #36

AG = 0

AG (other)

- Signet color blend = 1
- No standard, variety is better = 1

Paving Material Selection

Decision Point

Staff Recommendation: Option A Pinehall Full Range



Furniture Palettes

- Benches
- Trash and Recycling
- Bike Racks
- Bus Shelters
- Streetlights

Summary of the Visual Preference Survey, March 2022

A. Street Furnishings

- A small majority prefers not to keep the current McLean street furnishings
- Black painted, traditional style street furniture
- Wood accents
- Warm, natural materials
- Integrated seat wall benches are desirable, where possible

B. Lighting

- Preferences are acorn streetlight, full cutoff acorn, and the decorative shoebox
- Other desirable lighting include landscape accent lighting, building up-lighting, and bistro style

Furniture Palette - Benches



Landscape Forms - Melville Bench

Materials: Powder-coated metal with metal or wood seat.

Dimensions: 76" L (backed) or 73" L (backless)

Options: backless, center/intermediate dividers, wood or aluminum seat, surface-mounted, embedded, freestanding

Finishes: Powder-coated, Woodgrain (No finish)

Furniture Palette - Benches



Forms + Surfaces - Camber Bench

Dimensions: 77.3" L or 101.3" L

Options: Center/intermediate arms, wood or aluminum seat, surface-mounted or freestanding

Finishes: Powder-coated, Natural-oiled Cumaru hardwood

Furniture Palette - Benches



Forms + Surfaces - Cordia Bench

Dimensions: 72.6" L

Options: backless, center/intermediate dividers, wood or aluminum seat, surface-mounted or freestanding

Finishes: Powder-coated, Natural-oiled Jatoba hardwood

Furniture Palette - Benches



Victor Stanley - City Sites CBF-12 Bench

Dimensions: 48", 72" or 96" L

Options: Backless, center arm, wood or aluminum seat, surface-mounted

Finishes: Powder-coated, wood

Furniture Palette - Benches



Victor Stanley - Framers Modern FB-324 Bench

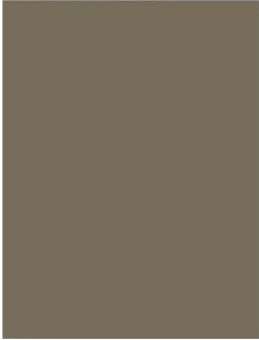
Dimensions: 24", 48", 72", 96", 144", 192" L

Options: Backless, center arm, wood or aluminum seat, surface-mounted

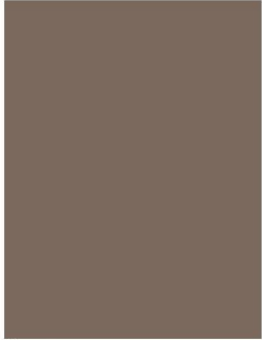
Finishes: Powder-coated, Natural-oiled IPE

Furniture Palette Selections

Landscape Forms
Powdercoat Colors



Stone



Bronze



Black Gloss

Hardwood



Ipe



Redwood

Forms + Surfaces
Powdercoat Colors



Dark Bronze Metallic Texture

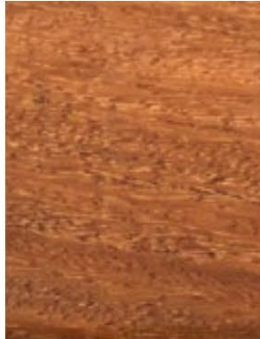


Slate Gloss



Black Gloss

Hardwood



Cumaru



Jatoba

ANOVA
Powdercoat Colors

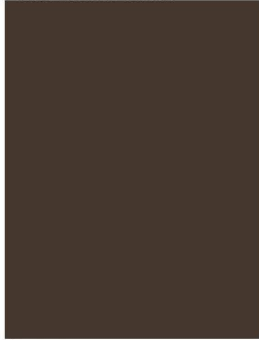


Textured Bronze



Black

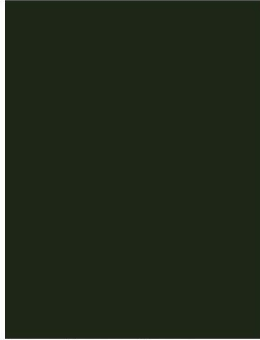
Victor Stanley
Powdercoat Colors



Bronze



Black



Tavern Square Green

McLean Furnishings Performance Criteria Summary

Benches

- a. **Material:** Mix of wood and factory powder-coat aluminum or steel.
- b. **Style:** Traditional or Modern Transitional style. Center divider arm preferred.
- c. **Color:** Black, warm gray, or dark green powder coated metal, natural-oiled finish hardwood. Wood should be FSC certified.
- d. **Size:** 48-78"
- e. **Installation Method:** Surface-mounted or embedded to a concrete pad/footer with brick over.
- f. **Location and Orientation:**
 - i. Oriented perpendicular to streets in the landscape panel.
 - ii. Near intersections and near building entrances.
 - iii. ~500-feet spacing along Old Dominion Drive and Chain Bridge Road.
 - iv. ~200-feet along Elm and Beverly Roads.
 - v. Along publicly-accessible linear parks and trails. Parallel to the walkway. ~200-feet spacing.

Furniture Palette - Trash and Recycling Receptacles



Landscapeforms Poe Receptacle

Dimensions: 27"D X 44"H

Options: side opening, side opening hole, side opening slot, top opening, custom wording

Finishes: powder-coated

Furniture Palette - Trash and Recycling Receptacles



Forms + Surfaces Urban Renaissance Receptacle

Dimensions: 26.6/28.4"D X 38.6-47.4"H

Options: side opening, side opening hole, side opening with recycling on top, single can split, custom wording, custom pattern wrap

Finishes: powder-coated

Furniture Palette - Trash and Recycling Receptacles



Forms + Surfaces Cordia Receptacle

Dimensions: 22.1"W X 22.1"L X 35.2"H

Options: rain cover, wood or aluminum insets, custom logos and text

Finishes: powder-coated, natural-oiled Jatoba hardwood

Furniture Palette - Trash and Recycling Receptacles



Anova Exposition Receptacle

Dimensions: 26-40" W X 19-31" L X 39-47" H

Options: 70-gallon double receptacle, custom logos and text

Finishes: powder-coated

McLean Furnishings Performance Criteria

Trash / Recycling Receptacles

- a. **Material:** Factory powder-coated aluminum or steel. Wood accents desired.
- b. **Style:** Traditional or Modern Transitional. Covered opening. Side access preferred.
- c. **Color:** Black, warm gray, or dark green powder coated metal. Natural-oiled finish hardwood. Wood should be FSC certified.
- d. **Size:** 34-gallon liner or larger.
- e. **Installation method:** Surface-mounted or embedded to a concrete pad / footer with brick over.
- f. **Location and Orientation:**
 - i. Placed in pairs of (1) trash and (1) recycling receptacle with each installation.
 - ii. Next to benches along streets.
 - iii. Along publicly-accessible linear parks and trails near points of entry.

Furniture Palette - Bike Racks



Landscape Forms - Emerson Bike Rack

Dimensions: 4"W X 20"L X 30"H

Options: surface-mounted or embedded

Finishes: powder-coated

Furniture Palette - Bike Racks



Landscape Forms - Bola Bike Rack

Dimensions: 1.5"W X 28.25"L X 32"H

Options: embedded

Finishes: powder-coated or stainless steel

Furniture Palette - Bike Racks



Landscape Forms - Loop Bike Rack

Dimensions: 14"W X 36"L X 31"H

Options: embedded

Finishes: powder-coated or stainless steel

Furniture Palette - Bike Racks



Forms + Surfaces - Cordia Bike Rack

Dimensions: 3.5"W X 20"L X 34.5"H

Options: surface-mounted with embedded anchors

Finishes: powder-coated

Furniture Palette - Bike Racks



ANOVA - Tandem Bike Rack

Dimensions: 6"W X 36"L X 32"H

Options: surface-mounted or embedded

Finishes: powder-coated or stainless steel

McLean Furnishings Performance Criteria

Bike Racks

- a. **Material:** Aluminum or steel with factory powder-coated finish.
- b. **Style:** Traditional or Modern Transitional. Individual racks. Must have two anchor points into the ground.
- c. **Color:** Black, warm gray, or dark green powder coated metal.
- d. **Size:** 27-35” tall
- e. **Installation method:** Surface-mounted or embedded to a concrete pad / footer with brick over.
- f. **Location and Orientation:**
 - i. Within ~50 feet of primary building entrances
 - ii. Near bike access routes to parks and trails.
 - iii. Does not impede circulation.
 - iv. Refer to Bicycle Parking Guidelines.

Furniture Palette - Transit Shelters



**Columbia Equipment Company, Inc.
Brandford Style Shelter**

BRANDFORD

Columbia Equipment Company – Brandford

There are many available options for mounting, lighting, materials, and other technologies. Developers should work with FCDOT on the specific transit shelter features.

SHELTER PAD

- 6-inch thick, reinforced concrete pad that is a minimum of **12.5-feet long by 6-feet** wide and that is connected directly to the sidewalk for accessibility purposes.
- If the transit shelter is to be located on a street with an 8-feet wide Amenity Zone, the transit shelter pad should be 8-feet in width to provide a contiguous surface from the curb to the sidewalk.

Furniture Palette - Transit Shelters



EURO

Tolar Manufacturing – Euro Shelter with integrated bench

Transit shelter dimensions: 6-feet wide by 10-feet long

* There are many available options for mounting, lighting, materials, and other technologies. Developers should work with FCDOT on the specific transit shelter features.

SHELTER PAD

- 6-inch thick, reinforced concrete pad that is a minimum of **15-feet long by 6-feet** wide and that is connected directly to the sidewalk for accessibility purposes.
- If the transit shelter is to be located on a street with an 8-foot wide Amenity Zone, the transit shelter pad should be 8-feet in width to provide a contiguous surface from the curb to the sidewalk.

Furniture Palette - Transit Shelters



NIAGARA

Tolar Manufacturing – Niagara Shelter with integrated bench

There are many available options for mounting, lighting, materials, and other technologies. Developers should work with FCDOT on the specific transit shelter features.

SHELTER PAD

- 6-inch thick, reinforced concrete pad that is a minimum of **18-feet long by 6-feet** wide and that is connected directly to the sidewalk for accessibility purposes.
- If the transit shelter is to be located on a street with an 8-foot wide Amenity Zone, the transit shelter pad should be 8-feet in width to provide a contiguous surface from the curb to the sidewalk.

Furniture Palette - Streetlights

Preferred options based on the Community Preference Survey



Acorn (not full cutoff)
Current McLean Standard



Full cutoff Acorn



Decorative Shoebox

Furniture Palette - Streetlights

Additional Options



**Round
Lantern**
(approved by
Dominion Power)



Trika
(under review)
Options with an
arm for wide
streets and post
top for narrow
streets



Azalea
(under review)



Paseo
(under review)



Metroscape
(under review)
Superior
Performance using
Comfort Optics

McLean Furnishings Performance Criteria

Streetlight

1. **Performance:** Pole Mounted LED, 3000K (warm white light)
2. **Technology:** “Smart City” enabled
3. **Environmental features:** Energy-efficient and Dark Sky: Full or partial cutoff
4. **Style:** Attractive fixture that contributes to the Neighborhood Village Concept and promotes pedestrian-scaled elements in the streetscape.
5. **Color/material:** Black, aluminum
6. **Complementary fixture styles:** for Avenues and Locals (*different street types can require different fixtures or fixture mounting height*)
7. **Pole spacing to mounting height:** 6:1 ratio is general rule of thumb