

Commercial Revitalization District (CRD) Maintenance Program Update

G-7 Meeting

Department of Public Works and Environmental Services
Working for You!

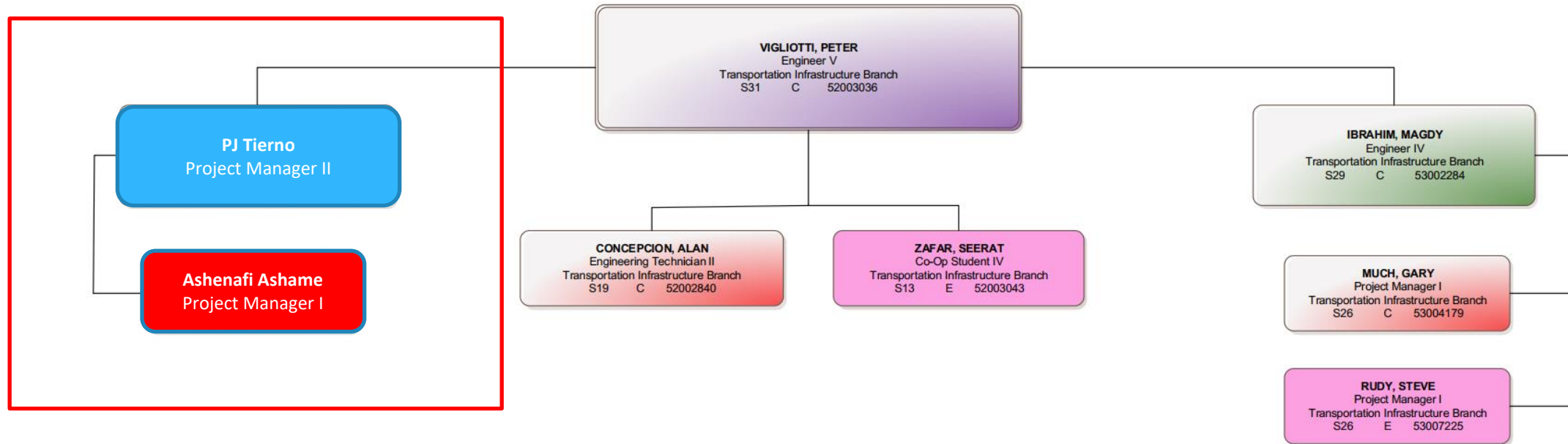


A Fairfax County, VA, publication
April 14, 2021

Organization & Staffing

Maintenance and Stormwater Management Division Transportation Branch Updated 06/19/2019

Total Number of Positions: 8
Vacancies Merit (C):0
Vacancies Limited Term 1560 (E):0
Vacancies Limited Term 900 (G): 0
Updated 06/19/2019



- **FY21 Routine Maintenance**
 - \$900,000
 - Includes routine landscaping and all landscaping enhancements
 - Funds Program and Project Manager
- **Sinking Fund**
 - Available: \$524,000
 - Estimated Accounted: \$850,000



Routine Maintenance Schedule

Operation	Jan.	Feb.	Mar.	Apr.	May	Jun.	Jul.	Aug.	Sept.	Oct.	Nov.	Dec.
Pre Emergent Weed Control												
Fertilizer												
Spring Clean Up												
Bed Edging & Mulch Installation												
Summer Flowers												
Herbicide												
Mowing												
Fall Flowers												
Pruning												
Leaf Removal												
Bi-Monthly Sidewalk Sweeping												
Street Light Inspections												



CRD Projected Growth

CRD	Current Square Footage (frontage)	Long-Term Square Footage (frontage plus street sweeping square footage)	Percent Increase
Annandale	150,656	578,256	283.8%
Baileys	417,294	799,194	91.5%
McLean	23,478	485,430	1,967.6%
Route 1	156,654	1,917,894	1,124.3%
Springfield	64,440	397,465	516.8%
Total	812,522	4,178,239	414.2%



- **Sidewalk sweeping**
 - Sweep all public sidewalks in each CRD
 - Bi-monthly (six occurrences per year)
 - Started December 2018
 - Approximately 126 tons of debris removed
- **Street Sweeping**
 - Montgomery County rider
 - Contract challenges
 - Bi-monthly
 - Started December 2019
 - Occurs in conjunction with sidewalk sweeping
 - Approximately 198 tons of debris removed



Bland Street Tree Box Replacement

- Establish ADA compliant walk
- 37 tree boxes replaced
 - ArboResin
- 37 trees replanted
 - Red Maple
 - Hornbeam
 - Ginkgo (male)
- 200 SF of sidewalk replaced
- 180 SF of pavers reset



Bus Shelter Replacements

- 6 bus shelters replaced
 - New benches and cans
 - Expanded concrete pads
 - 325 LF of curb and gutter
 - Locations
 - Tyler St & Columbia Pk
 - Wilson Blvd & Peyton Randolph
 - Seminary Rd & Magnolia Ln
 - South George Mason Dr
 - Medford Dr & River Turnpike Pk
 - Glen Carlyn Dr & Leesburg Pk



McLean Sidewalk Replacement

- Replaced approximately 13,000 SF of sidewalk at approximately 250 locations
 - Locations identified by Precision as part of trip hazard remediation



Paver Repairs

- Annandale, Baileys and McLean CRD
 - 2,000+ SF repaired
 - 100+ locations
 - New edge restraints along 2,000 LF of pavers



McLean Bench Replacements



FY21 & FY22 – In The Works



Sidewalk Replacement
Springfield CRD



Sidewalk Replacement
Baileys CRD



Bench Replacements
Springfield CRD



STW Pilot
Springfield CRD



Route 50
Pedestrian Bridge
Seven Corners CRD



Bus Shelter Replacements
Various CRDs



For additional information, please contact

PJ Tierno

703-324-1691

ptiern@fairfaxcounty.gov

www.fairfaxcounty.gov/publicworks

